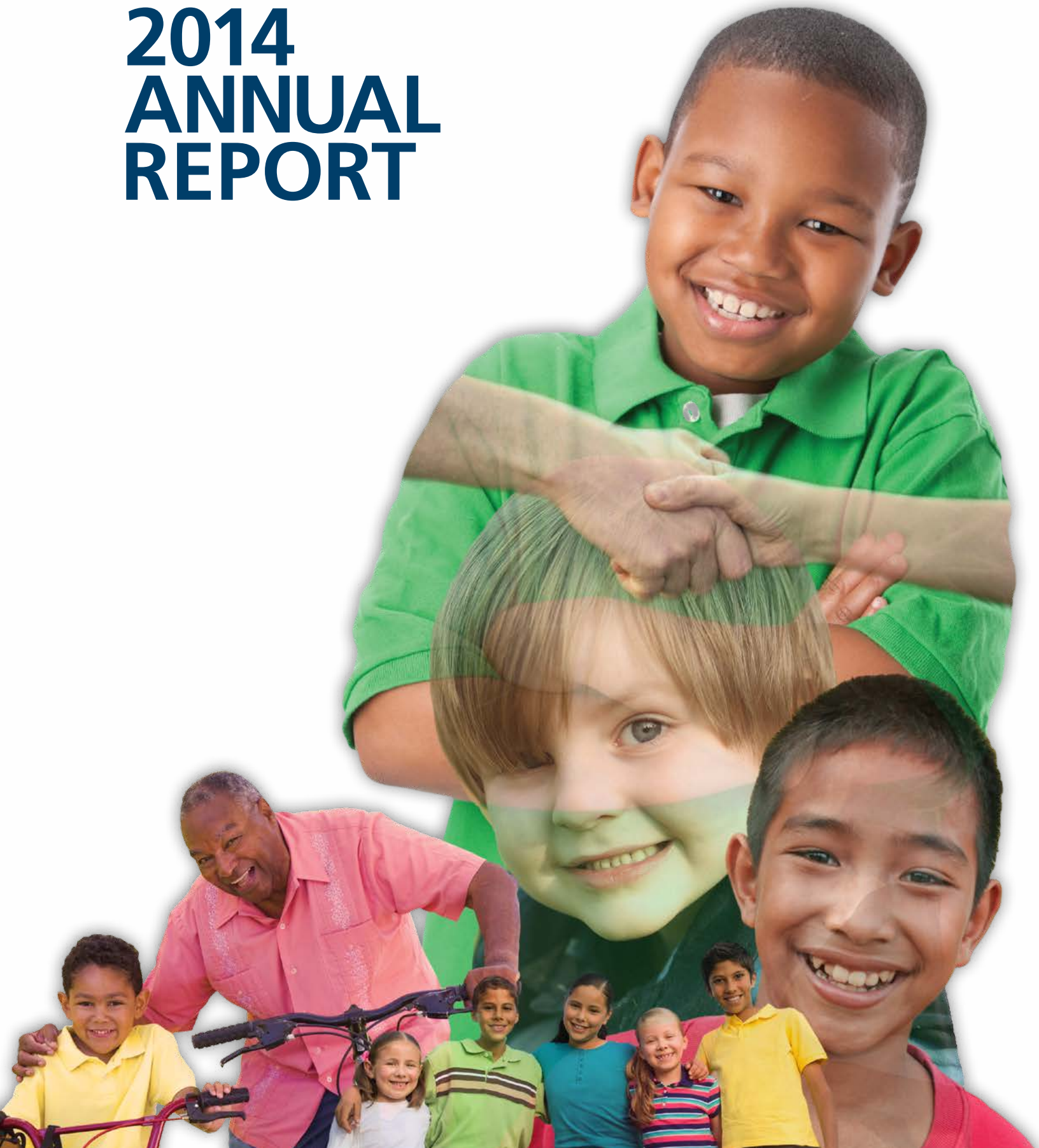


# 2014 ANNUAL REPORT



## MISSION STATEMENT

Promote the behavioral health of children, youth, and families and support a positive transition to adulthood.

## VALUES

Edgewood's Core Values of **Family, Community, Hope,** and **Diversity** guide every aspect of our work.

**We Engage Families** as they are the foundation of a child's life and are essential partners in achieving our vision and mission.

**We Develop Community** through a variety of relationships that promote love, friendship, resilience, and support.

**We Generate Hope** because hope fuels our belief in a positive future and the energy to achieve our goals and dreams.

**We Embrace Diversity** by appreciating our uniqueness and interdependence in order to learn and to strengthen our community.

## Overview

Edgewood Center for Children and Families (Edgewood) is a nonprofit provider of behavioral health services to thousands of children, youth, and families that have experienced traumatic stress leading to mental illness, learning disabilities, and debilitating behavioral issues. With treatment, education, and prevention programs, many children and families can overcome these challenges and transform their lives.

Founded in 1851, Edgewood is the oldest children's charity in the western United States. Since then, it has evolved to offer more than 25 programs in San Francisco and San Mateo counties ranging from prevention and early intervention to community based treatment, intensive programs, and residential care.

## Prevention and Early Intervention

Edgewood recognizes that kids do better when action is taken before behavior issues escalate. Its preventive and early intervention programs reach children where they are - in schools, neighborhoods, and communities.

## Community-Based Behavioral Health Services

These services are tailored for children at risk and those (such as caregivers, professionals, and other adults) in need of support in order to prevent mental health conditions from developing or escalating. Services are provided in homes, schools, and health clinics and include programs such as Kinship Support Services and Family Resource Centers. Additionally, Edgewood's therapeutic services provide youth and young adults with assessment, consultation, and behavior coaching through its Wraparound and Therapeutic Behavioral Programs.

## Day and After School Treatment

The Day Treatment Program provides children and youth with behavioral health services, including nursing, psychiatry, and special education at its non-public school. For those youth who are able to remain with their families but require additional support during the day, Edgewood's After School Program provides highly structured and short-term programs such as Intensive Outpatient and Expressive Arts, as well as a Drop-in Center for emerging adults to find support.

## Residential Treatment

Edgewood's Intensive Residential Services provides children and youth with acute needs, a safe home, and round-the-clock, in-person crisis support on its San Francisco-based campus. Youth learn how to access the tools they need to handle frustration and anger, control impulsive behaviors, and improve their problem solving and coping skills. Programs include Hospital Diversion and Family Connections Program.





# Transformative Services, Thought Leadership, and Financial Strength

Dear Friends,

Thanks to generous support from donors like you during the last 2013 – 2014 fiscal year, Edgewood continued touching the lives of well over 7,000 San Francisco Bay Area children, youth, and families. Because of you, children displaced from multiple schools due to behavioral issues were able to stay in class and experience continuity and success. Through our Intensive Residential Services, youth struggling in the foster care system found the stability they needed to thrive. Through our Kinship program, caregivers received the support they needed to keep children in their family unit, helping those children make a healthy transition into adulthood.

During the year, we made significant progress toward our 2016 Strategic Vision by building upon our three key priorities for the next three years – Transformative Services, Thought Leadership, and Financial Strength.

In the spring we converted our Williams building into a Crisis Stabilization Unit (CSU). The CSU is the only facility of its kind in San Francisco that provides a positive alternative to emergency rooms and psychiatric hospitals for youth in crisis by stabilizing them in less than 24-hours. We partnered with San Mateo County's Special Education Local Plan Area (SELPA) to provide school-based mental health consultation and treatment in every San Mateo County school district. This collaboration continues to provide teachers with the skills they need to support youth with mental health needs and improve the classroom environment for all students. Combined with our similar program in San Francisco, we are enhancing the learning experience for thousands of children.

As part of our commitment to Thought Leadership, our 1320 Impact program provided consultation and training to youth-serving agencies across San Francisco. The name 1320 comes from the fact that 13 percent of children at any given time have a mental health condition – yet only 20 percent of those youth access treatment. This program teaches professionals to identify youth and help them access the support they need.

Edgewood's overall financial strength continued to gain momentum as we again finished the fiscal year with an operational surplus. This stability is a direct result of loyal donors like you who renew and increase your support and help us fulfill our mission.

Throughout the year, the most rewarding part of our work has been witnessing the breakthroughs experienced by the youth and families we serve. Our holistic approach helps us transform lives and restore hope to so many in our community.

On behalf of everyone at Edgewood, thank you.

Sincerely,



Matt Madaus, LCSW  
President and CEO



John Bell  
Chairman



Matt Madaus, LCSW, President and CEO



John Bell, Chairman



Edgewood San Francisco Campus

## Edgewood Highlights



Individuals pictured are models used for illustrative purposes only.

### Crisis Stabilization Unit (CSU)

Tragically, many youth in San Francisco have not had an ideal place to be sent when their behavior escalates to the point of self-harm or acting out to threaten others. The only option available to them has been an emergency room visit where they spent hours in a packed waiting room with adults experiencing advanced psychiatric trauma. This environment puts youth at a great risk of their behavior escalating even further.

To address this problem, during the spring of 2014, Edgewood converted its Williams Building into a new **Crisis Stabilization Unit**. It is the only facility of its kind in San Francisco that provides a positive alternative to an emergency room stay. Any youth referred to the San Francisco Department of Health's Child Crisis Service now comes to Edgewood for initial assessment. There, they will be stabilized and assessed for release or referred for treatment as quickly as possible. The CSU continues the legacy of Edgewood as a key partner with the City and County of San Francisco.

### Edgewood Institute

The **Edgewood Institute** brings together the activities of research, quality improvement, training, and advocacy to develop an agency-wide, integrated system that uses data to assess and improve services, develop new ideas, provide training and support for staff, and advocate for needed organizational development to further Edgewood's core principles and goals.

During the year, Edgewood's research team officially launched its first online study as part of its three year evaluation for the National Demonstration Project's *United Ways of California-211-iFoster Kinship Navigator Project* funded by the Children's Bureau. Based on lessons learned from **Edgewood's Kinship families and staff**, the team designed and built an online study that collects both demographic and outcomes data on Kinship caregivers who register to use the online resource portal in four California counties. The primary goal is to evaluate the potential of this delivery model for addressing the needs of Kinship families.

Edgewood was selected by the Child Welfare League of America to present this research at the 2014 National Kinship Care Conference, *Building Communities of Caring for Children and Families*. The first presentation was on a panel entitled: Innovations in Kinship Navigation-Technology Advanced Models, and the second presentation was for an evaluation workshop entitled: *Evaluation of Kinship Navigator Programs: Everything You Always Wanted to Know, but Were Afraid to Ask*.

## DID YOU KNOW?

Founded in **1851**,  
Edgewood Center for Children  
and Families is the oldest  
children's charity in the western  
United States.

Edgewood has many programs  
that are available nowhere else  
in northern California, including  
the only level 14 group home—  
the highest level of care before  
a psychiatric hospital—for  
children and teens.

We impact  
the lives of over  
**7,000**  
children and their  
families each year.



# Edgewood Highlights

## San Mateo

Edgewood made considerable efforts in building new relationships and strengthening existing ones in the San Mateo region. For a second year, Edgewood San Mateo received a grant from the Margoes Foundation that will support the Transition Age Youth program. Many youth leaving residential programs will receive additional services to help them with independent living skills as they transition into adulthood.

Edgewood's [HealthyKin Program](#) is a suite of community health care services, such as home-based nursing and family counseling, for caregivers and their families in San Mateo County. During the year, Edgewood helped 85 percent of caregivers in that region increase their health knowledge – exceeding previous goals. Increasing the caregiver's knowledge about how to manage their health means a decrease in emergency room visits, and the ability to consistently provide care for their children.

At the community level, Edgewood is stepping up its **commitment to prevention and early intervention**. Often, the behavior of just one student can have an impact on the entire classroom, and research has shown that it can have a negative impact on test scores and even other students' behaviors. That is why the **San Mateo County Special Education Local Plan Area (SELPA)** engaged Edgewood to provide school-based mental health consultation and services for the 25 school districts within San Mateo County. The program provides consultation and training to teachers and school staff, as well as direct mental health services to children, youth, and families. This partnership gives teachers the skills needed to improve the classroom environment and support to youth with behavioral health issues before they escalate.

## The Bayview

In the spring of 2014, Edgewood's San Francisco Kinship Support Network and the Family Resource Center (now known as the Southeast Families United Family Resource Center) moved from the Sunset District to The Bayview-Hunter's Point in order to be centrally located to the families it serves each year. The new location also made it much more convenient for Edgewood families to access a full range of prevention, early intervention, and psychiatry services.

The Story Quilt Project (a program of the Kinship Quilting Group that started in 2008) celebrated its first anniversary in 2014 and continued to provide a therapeutic experience for caregivers to share their stories and find camaraderie.



Watch a video to learn how Edgewood helps children and families.



Edgewood Drop-in Center staff distribute health information at the San Mateo County pride celebration.



Kids from the Southeast Families United Family Resource Center enjoy a summer trip to Baker Beach in San Francisco.



Edgewood Kinship caregivers in Bayview share their stories and gleam support from one another through the [Story Quilt Project](#).



Rosy Le Cohen, left, and Lois Kincy during Wells Fargo's 2014 Community Support Campaign.

## Rosy Le Cohen – Corporate Volunteer

Rosy Le Cohen understands that her personal involvement with Edgewood makes an impact on young lives and the community. Her passion for local nonprofits that help children led her to volunteer at an Edgewood Corporate Impact Day in 2006. As she became more involved as a volunteer and donor, she felt inspired to encourage others to do the same. Since that first day of volunteering, she has led Corporate Impact Days through her division at Wells Fargo and arranged for Lois Kincy, a peer educator with Edgewood's San Francisco Kinship Program, to speak at the corporation's Community Support Campaign kick-off. Whether it is speaking on behalf of Edgewood, supporting programs financially, introducing Edgewood to her peers, or playing kickball with youth on campus, Rosy is a great example of how dedicated supporters invest their resources and passion to help kids make a healthy transition into adulthood.



Amy Kuschel of Amy Kuschel Bride.

## Amy Kuschel – Business Owner

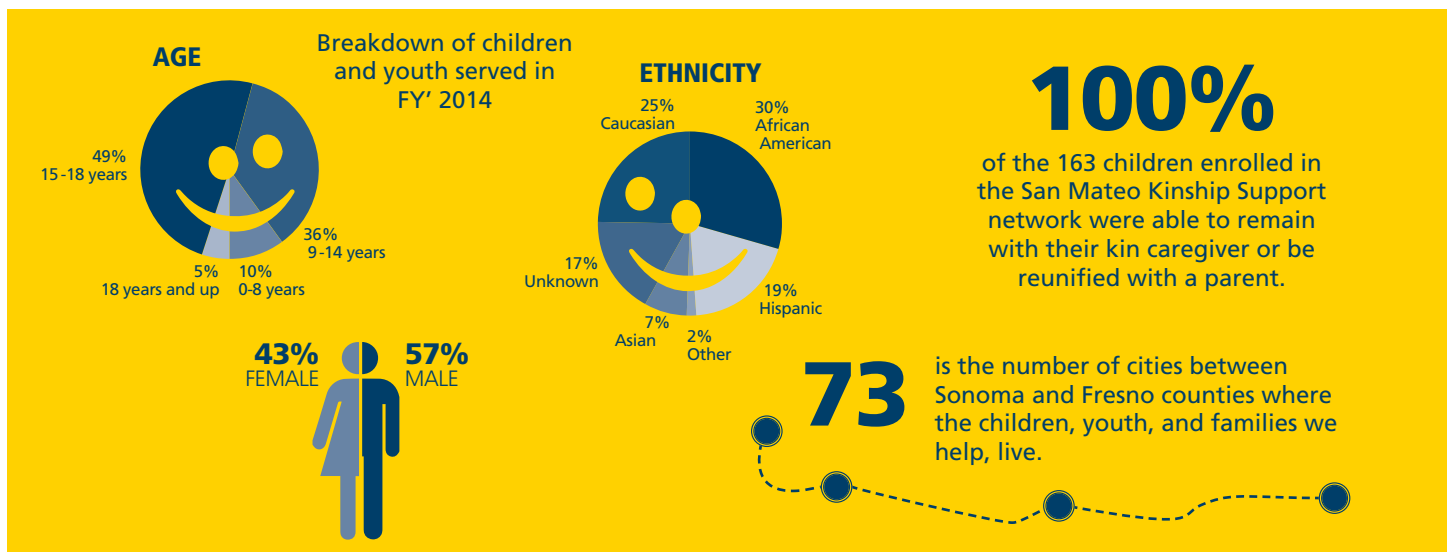
Amy Kuschel, owner of the San Francisco Boutique Amy Kuschel Bride, witnessed Edgewood's dramatic impact on kids the first day she volunteered. She wrote:

*I love Edgewood. it is one of those rare, magical places where good people do incredible things for children in need. The first time I volunteered at Edgewood, I was moved by a story about a boy whose parents had failed him. It was a heartbreaking tale of inconceivable abuse and neglect. Having two boys of my own, I struggled to imagine how this little kid could cope with such a tragic situation. Fortunately, he was brought to Edgewood. The brilliant and dedicated team carefully and thoughtfully helped this young, broken boy discover his strengths, find hope, and begin to heal and become whole again. Edgewood is full of stories like this, stories of transformation and hope.*

*It means a lot to me that San Francisco has a place like Edgewood.*

Amy continues to donate proceeds from the sales of the popular Kennedy Dress – part of the Gowns that Give program – and by doing so, continues to provide hope for the children and youth at Edgewood.

## DID YOU KNOW?





## Stories of Hope

### The “Caught You Campaign”

\*Trey was referred to Edgewood because of his aggressive behaviors both at school and at home. He was suspended from school often, in the counselor’s office daily, and the police were called several times in response to violent incidents. Edgewood staff saw another side to Trey; he was caring, intelligent, creative, and had a desire for self-expression. Together, they focused on his strengths and coping skills, and modeled a reinforcing positive set of replacement behaviors. After countless conversations with adults about their struggles with Trey, it became apparent that he received lots of attention for his negative behavior, while his attempts to change went mostly unnoticed.

Based on these observations, Edgewood developed the “Caught You Campaign”, a systemic intervention in which the authority figures in Trey’s world catch him doing things *right*. Trey’s teachers, therapist, and others at school really took to this intervention and Trey seemed to love the positive feedback he was receiving from those around him. The paradigm shifted from Trey being the problem, to taking Trey’s problems seriously and empowering him with the tools, skills, and support he needed to address the underlying issues. Trey’s family and teachers became much more engaged in his life, particularly in learning, rather than in dealing with the consequences of his behavior.

### A Message from Mom

The following message to an Edgewood Clinician in our Residential Program, came from a grateful parent. [Read other stories of hope here.](#)



Individual pictured is a model used for illustrative purposes only.

“I wanted to let you know that \*Clem is doing great. He loves his new school and is getting into the routine of life very well. He sees a therapist privately on Tuesdays and with the whole family on Thursdays. Fridays his school takes him on vocational outings. They go to home depot for projects or the grocery shop for things to make in their commercial kitchen. He did have a little trouble adjusting but he seems to have gotten over that hump and is doing great now. Now our big challenge is “normal” sibling rivalry. LOL! I can totally deal with that!!

There is no way I could ever find the words to thank you for all you did for Clem. If you or any staff working at Edgewood ever feel discouraged about your job, please remember Clem. You all helped change him and made a huge difference in our family. We will always be grateful.”

\*Client names have been changed to protect their privacy.

# Your Donations Make a Difference



Individuals pictured are models used for illustrative purposes only.

## WAYS TO GIVE

- Monthly giving
- Employer matching gifts
- Donate stock
- Planned giving
- Donate a vehicle

The need for Edgewood's services has never been more apparent. According to the Center for Health Reporting, mental health hospitalization of Californians under 21 rose by 38 percent between 2007 and 2012, jumping from 34,000 to 47,000.

In 2014, we provided behavioral health services to thousands of children, youth, and families throughout the Bay Area thanks to your support.

### Because of you:

- Children who have bounced from multiple schools due to behavioral health issues have been able to stay in class.
- Youth who have struggled for years in the foster care system have found the treatment they needed.
- Families have learned better parenting and life-skills enabling them to provide a nurturing home.

## Private Support

We are committed to helping children with the most effective and innovative clinical therapies. In order to provide such pivotal, transformative services, we rely on private support from individuals, foundations, and corporations who understand the importance of Edgewood to our clients and to the larger community.

Government contracts provide only a portion of the funding needed to help our children and families and pay for only the most basic of needs such as food, clinical services, education, and supervision.

Essential funding from the community supports quality improvement, training, facilities maintenance, infrastructure improvements, on-site medical care, essential programs, and some of the simple things children need to improve in physical and mental confidence.

Throughout the year, the most rewarding part of our work has been to witness the breakthroughs and transformations. With supporters like you, children, youth, and families will continue to thrive.

Thank you.

To make a donation, visit [edgewood.org/donate2015](http://edgewood.org/donate2015) or contact our Development Department at (415) 682-3120.



# Edgewood Activities

## Across the Bay 12K

In 2014, nearly 3,000 runners hit the pavement to help raise funds for Edgewood during the annual foot race. In addition to being a fundraiser and good community event, the run also helps many kids at Edgewood participate in a sport that gets their bodies moving, and contributes to a healthier well-being.



Across the Bay 12K

## 48th Annual Edgewood Fair – Last Days of Disco

The [Edgewood Auxiliary](#) hosted a fabulous two-day disco-themed fundraising event to support Edgewood’s programs for youth and families. The preview party, luncheon, and shopping were all a huge hit for the 400 guests in attendance, many who wholeheartedly embraced the disco theme. Special thanks to **Elizabeth Leep**, President of the Edgewood Auxiliary, and **Amanda Valentino** and **Sarah Semple**, Fair co-chairs, for their extraordinary work in making the Fair a huge success.



48th Annual Edgewood Auxiliary Fair

## Edgewood’s Breakfast of Hope

In 2014, Edgewood created a community and donor event designed to engage current supporters as well as those who were not familiar with Edgewood’s work. The *Breakfast of Hope* was filled with heartwarming stories of hope and transformations, a presentation about behavioral health, and the importance of prevention and early intervention services.



Breakfast of Hope

## Camp Edgewood

For 50 years, the summer camp provides youth with a unique blend of therapeutic treatment, behavioral support, and independent living skills development, all while enjoying the outdoors and learning about California culture. In the summer of 2014, a group of kids from Edgewood participated in the three-week-long event led by Edgewood’s Sports and Recreation and After School Program staff. Outings included trips to the San Francisco Zoo, Ocean Beach, Santa Cruz Beach Boardwalk, hiking in Muir Woods, and an overnight camping trip on Mt. Tamalpais.



Camp Edgewood

To view upcoming Edgewood events, visit [edgewood.org/events](http://edgewood.org/events).



Edgewood San Francisco Campus

# Individual Donors 2013 – 2014

Thank you to the individuals, organizations, and corporations who helped our efforts to build positive futures for Bay Area youth who are in crisis, have been impacted by trauma, or have debilitating behavioral challenges. The following names reflect gifts made between July 1, 2013 and June 30, 2014. We strive to make the listing of names as accurate as possible. Please let us know if there are any discrepancies or if you would like your name listed differently in the future. You may contact Gregg Biggs at [GreggB@edgewood.org](mailto:GreggB@edgewood.org).

## ULTIMATE HERO

(\$20,000+ )

Susan and William Oberndorf  
Marcy Pattinson

## SUPER HERO

(\$10,000+ )

Matthew and Lisa Chanoff  
Rosy Le Cohen  
Susan and Robert Cronholm  
James and Carole Daley  
Emilie and Andrew Lynch  
Mary Ann and William Margaretten  
Kathy and David Scially

## HERO

(\$5,000+ )

Lorraine Bosche  
Owsley and Victoire Brown  
Michael and Jeanie Casey  
Linda and Thomas Coates  
Robert and Dana Emery  
Michelle and Robert Friend  
Jeannie and Mark Harris  
Anne B. Popkin  
Kimberly and Philip Summe  
Geoff and Colleen Tate

## GUARDIAN

(\$2,000+ )

Anonymous  
Suzanne and Douglas Baird  
John Bell and Jason Spicer  
Anna and Gregg Brockway  
Julie and Gregory Flynn  
Mary and Phillip Graf  
Meg and Malcolm Heinicke  
Susan and Doug Hendrickson  
Elizabeth and Zachary Hulsey  
Kate and Andy Jenks  
Alexis and George Kalikman  
Cheryl and Gary King  
Elizabeth and Cortland Larned  
Janet Lautenberger  
Joan Lautenberger  
Elizabeth Leep  
Rick Mariano and Katherine Feinstein  
Archibald and Anne McClure  
Kenneth Olivier and Angela Nomellini  
Catherine Pajak and Robert Purcell  
John and Lisa Pritzker  
Sarah Semple

Bessie and Billy Seybold  
Brooke Shields and Deborah Wald  
Amanda and Matt Valentino  
Summer and Brooks Walker III  
Mallary and Johnny Walker  
Ruth and Arthur Weiss

## DEFENDER

(\$1,000+ )

Nancy and Doug Abbey  
Donna and Eric Abrahamson  
Kelly and Sigurd Anderson  
Ann F. Barry  
David and Nancy Brown  
Sharon and Edward Bullard  
Tina and Oliver Burgelman  
Usha and John Burns  
Sandi and Marcus Colabianchi  
Christopher and Jane Cook  
Lurline R. Coonan  
Joanne Cormican  
Angela and Scott Crabill  
David and Carla Crane  
Brett Critchlow  
Kathleen and Todd Darling  
Denise Dettore  
Sarah and Brooks Doggett  
Glen and Janette Elliott  
Josh Ellis  
Robert Ellsworth  
Veronica and Ned Fennie  
Karen Fiester  
Jennifer Caldwell and John H. N. Fisher  
John and Laura Fisher  
Kelly and Chris Fogarty  
Stephanie and Charles Fountaine  
Laurel and Joshua Frazier  
Louise and Lawrence Frye  
Amanda and Tim Garry  
Beth Brady and Brian Grossman  
Carissa and Andrew Hawthorn  
Wendy Hayward and Rich Wendling  
Kate and Brian Healy  
Evan Hirsch  
Melanie and Kurt Hoefler  
Wendy Holcombe and Carl Kawaja  
Paul B. Holm, Jr.  
Susanna and Adam Holt  
Thayer and Greer Hopkins  
Alyson and JJ Huff  
Garen Ingleby and Valerie Hurysz  
Emily and George Jaquette  
Ronald Jorgensen

Stephanie and Michael Kruse  
Linda and Kevin Lynch  
Lilian and Michael Lynch  
Joan and Richard Madden  
Anne and Jim Magill  
Liz and Marc Mahon  
Sanjiv and Joey Manjusha  
Amanda and Craig Marmer  
Alison and Michael Mauze  
Anna and Mason Morfit  
Kana Muraki  
Kelley and Josh Myerberg  
Oksana and Tim Myers  
Christine and Vincent O'Gara  
Edna and Peter O'Hara  
Susan and Richard Olness  
Leslie and Scott Olrich  
Leslie and Brendan O'Neil  
Kimberly and Gary Palmer  
Stephanie Pappas  
Brian and Jessica Patton  
Duane and Patricia Pellervo  
Carrie and Gregory Penner  
Elizabeth Peters  
Eleanor and Todd Pollak  
Julie Rumberger  
Elisa and Jeffrey Rummel  
Sobia and Nadir Shaikh  
Maggie and Brian Shepard  
Lori and Todd Shigekane  
Brian and Daphne Smith  
Mary and Sherwood Stockwell  
Dina and Joseph To  
Patrice and Michael Wilbur  
Caroline and Bary Wilkinson  
Diane B. Wilsey  
Barbara and Milton Wilson  
Beverly and Loring Wyllie  
Kelly Wyllie  
Charley and Bob Zeches

## CHAMPION

(\$500+ )

Katrina and Tom Abbott  
Jennifer and Gregg Abernathy  
Abigail and Christopher Adams  
Francesca and Jeffrey Amann  
Lynn Atkinson and Brad Dickman  
Nicole and Michael Barker  
Kristina and Ty Barnes  
Niti and Montu Bashambu  
Cindy Basso  
David and Tami Bell  
Carol Benz  
David and Stephanie Bickham  
Gregg Biggs  
Scott and Pamela Bohner  
Kerry and Chris Bourdon  
Tina and Joe Bou-saba  
Scott Campbell and Patricia Bovan-Campbell  
Thesia and Ambi Bowo  
Christine and Conrad Branson  
Robert and Rita Burgelman  
Elizabeth Burnham  
Alicia Burt  
Barbara and Steven Cabrol  
Ifen and Steve Carlson  
Kwok Cheung  
Ann and Cornelius Corkery  
Suzanna and Stone Coxhead  
Donald Curtin and Catharine Keena  
Victoria and Rick Dade  
Amira and David Dallafior  
Susan DaSilva and Dr. Thomas G. Roberts  
Kerry Davidson  
Courtney and Owen DeHoff  
Christine DeSanze and Scott Anthony  
Jeffrey and Lisa Diamond  
Meredith Dillon  
David and Margaret Dines  
Sarah and Grant Dollens  
Sandy Donnell and Justin Faggioli  
Abbey Doolittle and Joseph Scalise  
Thomas and Janice Downey  
Meredith and Kempton Dunn  
Cathy Ellis  
David and Stacey Epstein  
Jacqueline and Christian Erdman  
Kelly Fair  
Richard Falk and Francine Falk-Allen  
Tomoko Fortune  
Karen and William Foss  
Betsy Foy

## Individual Donors 2013 – 2014 continued

Josie and Brian Freckmann  
Casey and Zack Georgeson  
Nora Gibson and William Hudson  
Courtney and Bryan Girardo  
Joanne and Jon Goldstein  
Laura and Todd Green  
Andrew Grieco  
Patrick and Sheila Proby Gross  
Stefanie and Eric Grosse  
Alexis and Joe Gulash  
Mary and Richard Hafner  
Carrie and Trevor Hamilton  
Mildred and Patrick Hanley  
Graeme Hanson, M.D.  
Patricia Hanson  
Corinne Hedrick  
Diana and Doug Horner  
Nancy and John Hsieh  
Robin Hubinsky  
Nora Gibson and William Hudson  
Kevin Jenkins  
Melanie and Chris Johnke  
Leigh and Ted Judson  
Stephanie and David Julian

Betty and Forrest Junod  
Michelle Keene and Mark Tellini  
Charles and Emily Kelley  
Kristen and Jim Kelly  
Mary Kenney  
Noah and Angie Knauf  
Matthew Koch  
Brooke and Jeffrey Kruger  
Jude and Eileen Laspa  
Neely Lawton  
Patti Lee  
Willie and Maria Lew  
Adrienne Luzzi  
Stefanie Maragna and Bart Foster  
Camille and Bradford Marks  
Barbara and Fillmore Marks  
Jennifer and Jarred Marlin  
Amanda and Craig Marmer  
Dave and Jan Marson  
Stephanie Martin  
Wendy McCall  
Donna and Jim McCluskey  
Michael McKenna  
Suzanne and Rob Mellor

Misty and Nicholas Meyer  
Gregg and Shonaree Michael  
Roger Miles  
Krista and Aaron Moatz  
Ellen and Jim Myerberg  
Stephanie and Mike Ogorne  
Jennifer Olsen  
Denise Orwin  
Marie Luise Otto  
Scott Parker  
Brooke and Christopher Perkins  
Sarah and Thomas Pinckney  
Tatem and Morgan Read  
Robin J. Reilly  
Melissa and Justin Reyna  
Amanda Rickel and Andre Gharakhanian  
Cameron and David Rivinus  
Katrin and John Robb  
Elizabeth and Lyle Ross  
Albert Sanford and Dorothy Wildman  
Catarina and Andy Schwab  
Marisa Scordelis  
Pearl Anne Seipp

Stephanie Smith  
Jane and Scott Stiteler  
James and Anita Topinka  
Julie and Timothy Van Voris  
Fred Vela  
Abbey and Paul Walker  
Robert Walton  
Buffy and Tom Wang  
Lisa and Greg Wendt  
Eve and Wally Wertsch  
Gina Mackintosh and Steven Wright  
Patricia Wyrod  
Pamela Yatsko and Brewer Stone  
Betsy York  
Lee and Margaret Zeigler

## Legacy of Hope 2013 – 2014

Michael and Jeanie Casey  
Michele Chaboudy and Eron Flory  
Ann Coleman  
Sisi and Herbert Damner  
Sandy Donnell and Justin Faggioli  
Donald J. Kerner, M.D.  
Donna and Morris Kilgore  
Sigmund Kriegsmann  
Luanne and Michael J. Lotito  
Marilyn Louie  
M. L. Mackie  
Joan and Richard Madden  
Anne and Jim Magill  
Rick Mariano and Katherine Feinstein  
Jane E. Maushardt  
Nancy Maushardt  
Anne and Archibald McClure  
Helen and Michael A. O'Hanlon  
Ms. Geraldine Rausch  
Charlotte Schmiedel  
Mary Ellen and Richard A. Smith

## Matching Gift Organizations 2013 – 2014

Adobe Systems  
Bank of America  
BlackRock  
Dolby  
Genentech  
Goldman, Sachs & Co.  
Google  
Kaiser Permanente  
Microsoft  
PG&E  
PricewaterhouseCoopers  
Salesforce.com Foundation  
Symphony Asset Management  
UBS  
United Airlines  
VMware Foundation  
The Walt Disney Company Foundation  
Zephyr Real Estate

## Estates and Trusts 2013 – 2014

John Kelly Trust  
North Baker Trust  
Estate of Berenice Roth Spalding  
Lionel Steiner Trust  
Kathleen Mulligan Trust  
Amasa P. Willey Trust





# Collaborations and Corporate Partners

## Spinsters of San Francisco

The Spinsters of San Francisco made a considerable impact this past fiscal year after choosing Edgewood as their 2013 – 2014 charity partner. Through their year-long fundraising efforts, the Spinsters raised \$25,000 for Edgewood's Expressive Arts Program. In addition, their creative volunteerism demonstrated a deep commitment to philanthropy and advocacy for Edgewood.



Watch a video about the Adobe Action Team and how they're teamed up with Edgewood and other nonprofit community partners to make a difference.

## Adobe

During the fiscal year, Adobe chose to support Edgewood through its foundation and employee volunteer activities. Adobe Action Committee members volunteered at Edgewood throughout the year, bringing their talents and support to the Campus After-School Program. The Action Committee also selected Edgewood as a recipient of a \$20,000 Foundation grant in support of the Edgewood Food Bank.

## DDB Worldwide

In 2014, DDB California, an internationally known advertising firm, selected Edgewood as its charitable partner. The firm's support of Edgewood spans across a variety of areas, including pro bono marketing and communications services, employee volunteerism, and event sponsorship. DDB's marketing expertise and involvement with Edgewood has positively impacted the Edgewood brand.

To learn about corporate partner opportunities or workplace giving, visit [edgewood.org/partnerships](http://edgewood.org/partnerships).

## Corporations, Foundations, and Organizations 2013 – 2014

### ULTIMATE HERO

(\$20,000+ )

Challenge to Learning  
Dodge & Cox  
Farallon Capital  
Levi Strauss & Company  
Margo Foundation  
Peninsula Health Care District  
The San Francisco Foundation  
S. H. Cowell Foundation  
Willow Springs Foundation  
U.S. Trust, Bank of America Private Wealth Management

### SUPER HERO

(\$10,000+ )

Frank A. Campini Foundation  
Palo Alto Community Fund  
State Street Global Advisors

### HERO

(\$5,000+ )

Anonymous  
Bank of Marin  
Commonwealth  
Deloitte LLP  
Ducommun and Gross Family Foundation  
Heffernan Insurance Brokers and IICF

The Junior League of Palo Alto - Mid Peninsula, Inc.  
Lan Jaenicke LLC  
Lawrence Israel Family Foundation  
Mills-Peninsula Health Services  
Phileo Foundation  
Rocks with Soul  
Wells Fargo Foundation

### GUARDIAN

(\$2,500+ )

Amy Kuschel Bride  
Angela Alvarez, LLC  
Busy Bees Collection, Inc.  
CALFOX, Inc.  
Winifred Johnson Clive Foundation  
Edelman Digital  
Heidisays Shoes  
Jacqueline B., Inc.  
Kathy Kamei Design  
The Morrison & Foerster Foundation  
NAIFA San Francisco Peninsula  
Oliphant Design LLC  
Orrick, Herrington & Sutcliffe LLP  
Prologis  
RhodyCo Productions  
San Francisco Federal Credit Union  
Say Hey Foundation  
Sleep Train  
Symphony Asset Management

Tamsyn, LLC  
The Treasured Accessory  
Ticket to Dream Foundation  
VMware Foundation

### DEFENDER

(\$1,000+ )

Bird Dog Bay, Inc.  
Carrie Dunham LLC  
Charlotte Brody  
Chic By Design  
EMJ Designs LLC  
Genentech  
George Lucas Family Foundation  
Hitachi America, Ltd.  
The Hitachi Foundation  
J. McLaughlin  
Johnnie-O  
Julie Vos  
Kiki Bean  
Lesley Evers, LLC  
Margaret Elizabeth  
Masud and Alex Mehran Foundation  
ModCloth  
Nuraxi Home LLC  
Ana T.L. Dierkhising  
- Pacific Union Real Estate  
Plant Construction Company, L.P.  
Roberta Freymann  
San Francisco 49ers Foundation

Silhouette New York LLC  
Silicon Legal Strategy  
Sing For America Foundation  
Smathers Branson LLC  
Spinsters of San Francisco  
Strut-This  
Zephyr Real Estate

### CHAMPION

(\$500+ )

Ashley Ashoff  
Atelier360  
Burke Decor, LLC  
Charles Schwab - West Portal  
Charleston Shoe Company  
Designs by Georgina  
Ella Lou LLC  
Elle-Meme  
Google Inc.  
Joysmg, Inc.  
Kayce Hughes  
MDVII Antiques  
Sutton Law Firm  
The Pampered Pixel  
Tracey McCabe Pollack  
United Parcel Service  
World Oyama Karate  
Whole Foods Market

# Edgewood Fair – Last Days of Disco 2014 Sponsors

## CATS TO THE MAX

(\$10,000+ )

Dodge & Cox  
Susan and William Oberndorf

## FAR-OUT FELLOWS

(\$5,000+ )

Linda and Thomas Coates  
Anne B. Popkin

## BOOGIE BENEFACTOR

(\$2,500+ )

Suzanne and Douglas Baird  
John Bell and Jason Spicer  
Anna and Gregg Brockway  
Julie and Greg Flynn  
Mary and Phillip Graf  
Susan and Doug Hendrickson  
Elizabeth and Zachary Hulsey  
Kate and Andy Jenks  
Cheryl and Gary King  
Janet Lautenberger  
Elizabeth Leap  
Mary Ann and William Margaretten  
Orrick, Herrington & Sutcliffe LLP  
Sarah Semple  
Symphony Asset Management  
Amanda and Matt Valentino  
VMware Foundation

## GROOVY GIVERS

(\$1,000+ )

Nancy and Doug Abbey  
Kelly and Sigurd Anderson  
Sharon and Edward Bullard  
Angela and Scott Crabill  
Kathleen and Todd Darling  
Ana T.L. Dierkhising - Pacific Union  
Real Estate  
Jennifer Caldwell and John H.N.  
Fisher  
Laurel and Joshua Frazier

Genentech

Carissa and Andrew Hawthorn  
Wendy Hayward and Rich Wendling  
Kate and Brian Healy  
Meg and Malcolm Heinicke  
Melanie and Kurt Hoefer  
Paul B. Holm, Jr.  
Susanna and Adam Holt  
Emilie and Andrew Lynch  
Linda and Kevin Lynch  
Rick Mariano and Katherine Feinstein  
Alison and Michael Mauze  
Anna and Mason Morfit  
Kana Muraki  
Kelley and Josh Myerberg  
Oksana and Tim Myers  
Christine and Vincent O'Gara  
Edna and Peter O'Hara  
Leslie and Brendan O'Neil  
Kimberly and Gary Palmer  
Stephanie Pappas  
Marcy Pattinson  
Plant Construction Company, L.P.  
Maggie and Brian Shepard  
Brooke Shields and Deborah Wald  
Silicon Legal Strategy  
State Street Global Advisors  
Kimberly and Philip Summe  
Patrice and Michael Wilbur  
Caroline and Bary Wilkinson  
Diane B. Wilsey  
Beverly and Loring Wyllie  
Kelly Wyllie  
Charley and Bob Zeches

## DIG IT DONORS

(\$500+ )

Katrina and Tom Abbott  
Jennifer and Gregg Abernathy  
Donna and Eric Abrahamson  
Abigail and Christopher Adams  
Lynn Atkinson and Brad Dickman  
Nicole and Michael Barker

Kristina and Ty Barnes

Niti and Montu Bashambu  
Gregg Biggs  
Kerry and Chris Bourdon  
Tina and Joe Bou-saba  
Thesia and Ambi Bowo  
Christine and Conrad Branson  
Alicia Burt  
Ifen and Steve Carlson  
Jeanie and Michael Casey  
Charles Schwab - West Portal  
Sandi and Marcus Colabianchi  
Suzanna and Stone Coxhead  
Victoria and Rick Dade  
Amira and Dave Dallafior  
Susan DaSilva and Dr. Thomas G.  
Roberts  
Christine DeSanze and Scott Anthony  
Meredith Dillon  
Sarah and Brooks Doggett  
Abbey Doolittle and Joseph Scalise  
Meredith and Kempton Dunn  
Jacqueline and Christian Erdman  
Kelly Fair  
Kelly and Chris Fogarty  
Tomoko Fortune  
Josie and Brian Freckmann  
Amanda and Tim Garry  
Nora Gibson and William Hudson  
Courtney and Bryan Giraud  
Laura and Todd Green  
Patrick and Sheila Proby Gross  
Stefanie and Eric Grosse  
Alexis and Joe Gulash  
Carrie and Trevor Hamilton  
Graeme Hanson, M.D.  
Corinne Hedrick  
Diana and Doug Horner  
Alyson and JJ Huff  
Melanie and Chris Johnke  
Leigh and Ted Judson  
Stephanie and David Julian  
Kristen and Jim Kelly

Noah and Angie Knauf

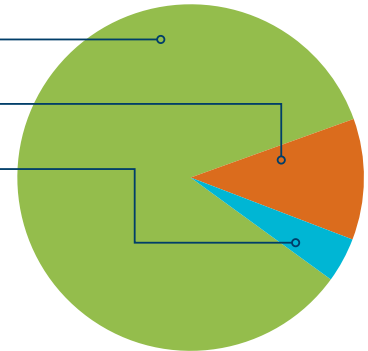
Brooke and Jeffrey Kruger  
Stephanie and Michael Kruse  
Neely Lawton  
Lilian and Michael Lynch  
Stefanie Maragna and Bart Foster  
Camille and Bradford Marks  
Barbara and Fillmore Marks  
Jennifer and Jarred Marlin  
Amanda and Craig Marmer  
Donna and Jim McCluskey  
Suzanne and Rob Mellor  
Misty and Nicholas Meyer  
Krista and Aaron Moatz  
Ellen and Jim Myerberg  
Stephanie and Mike Ogborne  
Marie Luise Otto  
Eleanor and Todd Pollak  
Tatem and Morgan Read  
Robin J. Reilly  
Amanda Rickel and Andre  
Gharakhanian  
Cameron and David Rivinus  
Elizabeth and Lyle Ross  
San Francisco Federal Credit Union  
Catarina and Andy Schwab  
Kathy and David Scially  
Marisa Scordelis  
Pearl Anne Seipp  
Bessie and Billy Seybold  
Lori and Todd Shigekane  
Jane and Scott Stiteler  
Sutton Law Firm  
Dina and Joseph To  
Julie and Timothy Van Voris  
Abbey and Paul Walker  
Mallory and Johnny Walker  
Lisa and Greg Wendt  
Eve and Wally Wertsch  
Patricia Wyrod  
Pamela Yatsko and Brewer S. Stone



# Financials for the year ended June 30, 2014

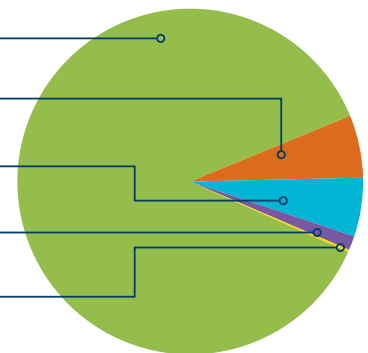
## OPERATING EXPENSES

Program Expenses	\$ 22,513,496	<b>84%</b>
Administrative Services	\$ 2,993,745	<b>11%</b>
Contributions & Special Events	\$ 1,366,086	<b>5%</b>
<b>Total</b>	<b>\$ 26,873,327</b>	



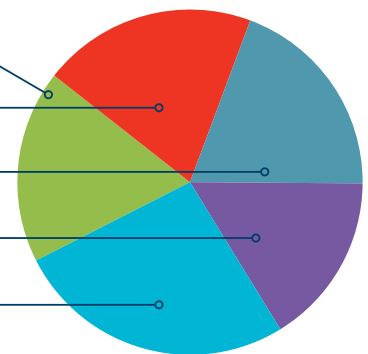
## REVENUE SOURCES

Government Contracts	\$ 23,166,427	<b>86%</b>
Private Pay	\$ 1,712,588	<b>6%</b>
Contributions	\$ 1,466,269	<b>5%</b>
Special Events	\$ 345,815	<b>1%</b>
Other Income	\$ 142,142	<b>1%</b>
<b>Total</b>	<b>\$ 26,833,241</b>	



## CONTRIBUTIONS & SPECIAL EVENTS

Corporate & Foundations	\$ 323,708	<b>18%</b>
Individuals	\$ 352,441	<b>19%</b>
Events	\$ 345,815	<b>19%</b>
Planned Gifts	\$ 161,776	<b>9%</b>
In-Kind	\$ 628,344	<b>35%</b>
<b>Total</b>	<b>\$ 1,812,084</b>	



DZH Phillips LLP provided an Independent Auditors' Report for the year ending June 30, 2014. Audited financial statements (in pdf format) are available upon request from Edgewood's Finance Dept. at (415) 682-3214.



## Edgewood Board of Directors 2013 – 2014

John Bell, *Chairman*  
Denise Dettore  
Josh Ellis  
Meg Heinicke  
Alexis Kalikman  
Janet Lautenberger  
Stefanie Maragna  
Tim Myers  
Kathy Scially  
Brooke Shields  
Alan Stein  
Kimberly Summe  
Fred Vela  
Kelly Wyllie

**Directors Emeriti**  
Bea Baldauf  
Louis de K. Belden  
Jeanie Kirkwood Casey  
Jeanette Dunckel  
Sandy Donnell Faggioli  
Louise N. Frye  
Robert E. L. Gotcher, M.D.  
Graeme Hanson, M.D.  
Joan Madden  
Anne S. Magill  
Nancy Maushardt  
Susan Oberndorf

**Auxiliary Liaison**  
Elizabeth Leep



Edgewood's **Garden Learning Center**

## Edgewood Executive Leadership 2013 – 2014

Matt Madaus, LCSW  
*President and CEO*

James F. Mensing, J.D., Ph.D.  
*Executive Director, Edgewood Institute*

Todd Blatt  
*Director of Human Resources*

Robin Randall, MD, MPH  
*Medical Director*

Vincent Forte, MBA, MS  
*Chief of Finance and Administration*

Betsy York, MBA, CFRE  
*Chief Development Officer*

Monica Hendrix, MFT  
*Executive Director, San Mateo Region*

David A. Young, Ph.D, MPH  
*Executive Director, San Francisco Region*



Levi Strauss & Company Corporate Impact Day

## Edgewood Auxiliary Members 2013 – 2014

**President**  
Elizabeth Leep

**Fair Chairs**  
Sarah Semple  
Amanda Valentino

**Members**  
Jennifer Abernathy  
Mollie Allick  
Kelly Anderson  
Nicole Barker  
Kristina Barnes  
Kerry Bourdon  
Alicia Burt  
Sandi Colabianchi  
Angela Crabill  
Kathleen Darling  
Christine DeSanze  
Meredith Dillon  
Sarah DiLullo  
Sarah Dollens  
Abbey Doolittle  
Kelly Fair  
Jacqueline Foster  
Stephanie Fountaine  
Laurel Frazier  
Casey Georgeson  
Courtney Giraudo

Mary Graf  
Stefanie Grosse  
Carrie Hamilton  
Carissa Hawthorn  
Susan Hendrickson  
Susanna Holt  
Alyson Huff  
Kate Jenks  
Stephanie Julian  
Kristen Kelly  
Stephanie Kruse  
Neely Lawton  
Emilie Lynch  
Lilian Lynch  
Camille Marks  
Jenny Marlin  
Amanda Marmer  
Stephanie Martin  
Dana McCabe  
Sarah McCourt  
Paige Meuse  
Kelley Myerberg

Stephanie Ogborne  
Leslie O'Neil  
Anne Paris  
Sarah Pinckney  
Ellie Pollak  
Tatem Read  
Robin Reilly  
Amanda Rickel  
Lizzie Ross  
Marisa Scordelis  
Bessie Seybold  
Maggie Rae Shepard  
Lori Shigekane  
Danielle Simon  
Jane Stiteler  
Kristine Theiler  
Beshka Vukashin  
Mallary Walker  
Buffy Wang  
Dina Wong To  
Ariane Zewe

Edgewood Center for Children and Families is an independent, nonprofit organization funded through private charitable contributions and public fees for service. Donations from individuals, corporations, and foundations make our innovative programs possible.

Your donations bring hope to children and families. Please consider making a gift today by calling (415) 375-7582 or by visiting [edgewood.org/donate](http://edgewood.org/donate). To donate a vehicle, please call (877) 537-5277 or visit [edgewood.org/cars](http://edgewood.org/cars).

Learn more about  
Edgewood Center for Children and Families  
at [edgewood.org](http://edgewood.org).



EDGEWOOD  
SAN FRANCISCO  
1801 Vicente Street  
San Francisco, CA 94116  
Phone: (415) 681-3211

EDGEWOOD  
SAN MATEO  
957 Industrial Road, Suite B  
San Carlos, CA 94070  
Phone: (650) 832-6900

EDGEWOOD  
BAYVIEW  
3801 3rd Street, Suite 610  
San Francisco, CA 94124  
Phone: (415) 682-3276

EDGEWOOD  
INTAKE/REFERRALS  
Intake Department: 1 (844) EDGE411 (334-3411)  
or (415) 682-3172  
Make a referral, consult with staff,  
or schedule a tour. (M-F, 9am-5pm)

Get Social! Follow us at [@edgewoodcenter](https://twitter.com/edgewoodcenter)

