

Edgewood Center for Children and Families Crisis Stabilization Unit

The Crisis Stabilization Unit opened in 2014 and provides youth and families a safe, structured, child-friendly and family supportive environment. The CSU was created in conjunction with the San Francisco Department of Public Health to evaluate and triage children and youth (ages 5-17) who are experiencing acute psychiatric symptoms or a mental health crisis.

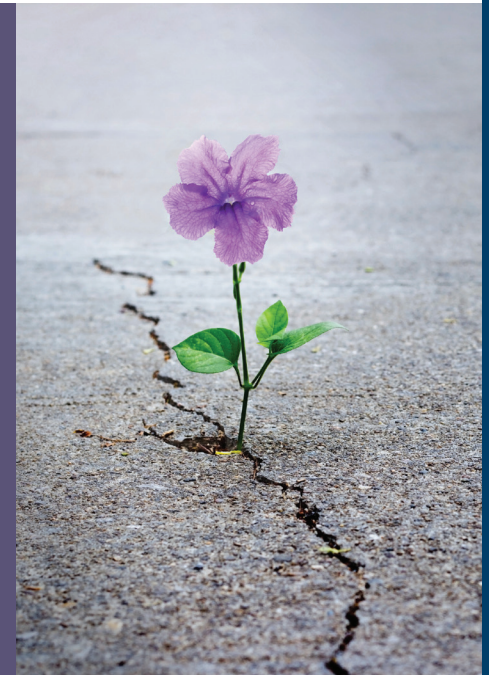
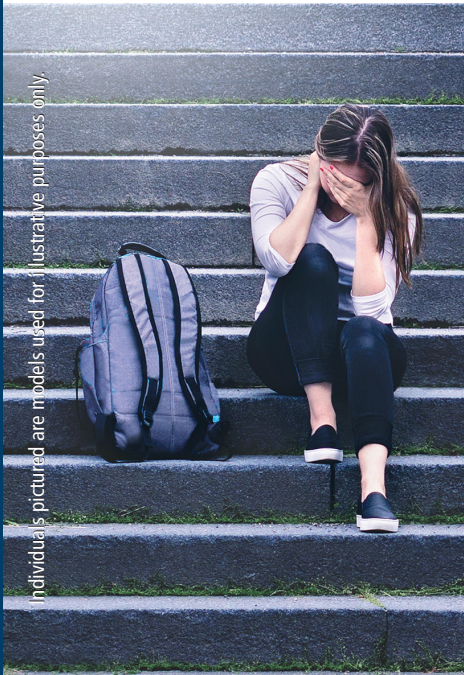
REFERRALS ACCEPTED 24/7/365

For more information please contact:

CSU MAIN LINE EDGEWOOD:
(415) 682-3278

CSU DIRECTOR:
Justine King, LMFT, LPCC
415-650-7876
jeking@edgewood.org

We accept referrals from all counties in the Bay Area and beyond. We accept Kaiser, most private insurances, and Medi-Cal of SF.



Why is the CSU Program Necessary?

Suicide is the second leading cause of death for teens in the U.S.¹ Centers for Disease Control and Prevention data from 2019 shows that 36 percent of San Francisco students reported feeling sad or hopeless almost every day for two or more weeks, while 16 percent said they had “seriously considered” attempting suicide in the prior year. Eight percent reported at least one attempt in that time period.² This represents children from all socioeconomic and ethnic backgrounds. The San Francisco Wellness Initiative notes that “if left unaddressed, absenteeism and low academic achievement are the most likely consequences.”³

CITATIONS

- [1] Centers for Disease Control and Prevention. (n.d.). High School Youth Risk Behavior Survey: California 2019 and United States 2019 Results. <https://rb.gy/taedis>
- [2] Curtin SC, Heron M. Death rates due to suicide and homicide among persons aged 10–24: United States, 2000–2017. NCHS Data Brief, no 352. Hyattsville, MD: National Center for Health Statistics. 2019. <https://www.cdc.gov/nchs/data/databriefs/db352-h.pdf>
- [3] SFUSD School Health Programs Wellness Initiative. (n.d.). Our Students. San Francisco Wellness Initiative. <https://sfwellness.org/our-program/our-students/>

EDGEWOOD CENTER FOR CHILDREN AND FAMILIES

provides behavioral health services to children, youth, and emerging adults aged 0 to 25. Each year, we touch the lives of thousands of families living in San Francisco and San Mateo counties who have experienced severe trauma, abuse, or neglect. Founded in 1851, Edgewood is the oldest children’s charity west of the Mississippi and offers programs ranging from prevention and early intervention to community based treatment, day and after school programs, residential treatment, and crisis stabilization. We accept referrals from all counties in the Bay Area and beyond.



About Edgewood's Crisis Stabilization Unit:

The CSU works to support youth and families with a preventative approach. The program is designed to assess and stabilize youth who are experiencing acute psychiatric symptoms or a mental health crisis. In addition, the CSU is also a receiving center for youth already placed on a psychiatric hold for further assessment and stabilization, as well as coordination of hospitalization when indicated.

The CSU is a multidisciplinary team, including a Medical Director, Psychiatric Nurse Practitioner, Clinicians, Nurses, Counselors, and a Family Peer Partner. Nursing and clinical care are provided 24/7.

The CSU team, in conjunction with the family, determines and facilitates discharge and safety planning.

The Edgewood CSU is one of only a few CSUs designed to serve youth 5-17 years of age in the entire state of California and the only one serving youth under 12 in the Bay Area.

It has become a critical service for the children, teens and families of San Francisco and neighboring counties.

Accreditation: In 2015, Edgewood earned The Joint Commission's Gold Seal® of Approval and remains accredited for Behavioral Health Care and Human Services Accreditation.

Who is Served?

- Youth who are experiencing a psychiatric crisis in San Francisco and neighboring counties who need immediate crisis evaluation and stabilization services
- The CSU also supports youth who are experiencing a mental health crisis and are in need of a multidisciplinary assessment and planned overnight stabilization in an effort to prevent acute psychiatric crisis.

Services Include

- Comprehensive psychiatric evaluation and risk assessment
- Medical screening
- Collaborative treatment planning with an individualized, strength-based focus
- Crisis stabilization and prevention
- Discharge planning including linkage with community supports and services
- Coping skills building and safety planning
- Parent and guardian support and education



Individuals pictured are models used for illustrative purposes only.

“My son and I were a little scared when we came here. Staff did an amazing job at explaining everything. Edgewood definitely helped us because the staff were so transparent. This was really refreshing and comforting and made this already heightened situation much easier to handle.”

– Parent

EDGEWOOD'S MISSION

To promote the behavioral health of children, youth, and families and support a positive transition to adulthood.